



**supertech**  
*Yours for Life*



**OXFORD  
SQUARE**

G+2 Independent floors  
at Sector-16B, Greater Noida (West)

FINALLY YOU DON'T HAVE TO SHARE  
YOUR WORLD WITH ANYONE.



elcome to world class, independent living spaces at Oxford Square, Greater Noida (West). These Independent floors provide freedom of living where you are not forced to live in claustrophobic environment. Each of the independent floors are designed to give you a feel of life in a villa and a great sense of space. Independent Floors at Oxford Square are truly an address you have always aspired for.







## OPEN SPACE, COMMUNITY AND CONVENIENCE

Life at Oxford Square is a perfect blend of open spaces, community living and conveniences. With exclusive features like a terrace garden, a splash pool and a lot more. To ensure that you are not forced to share your world with anyone else. With state-of-the-art security, gated complex, wide internal roads, shopping complex, club, gym etc., you can now enjoy independent living on your very own floor.



## FEATURES

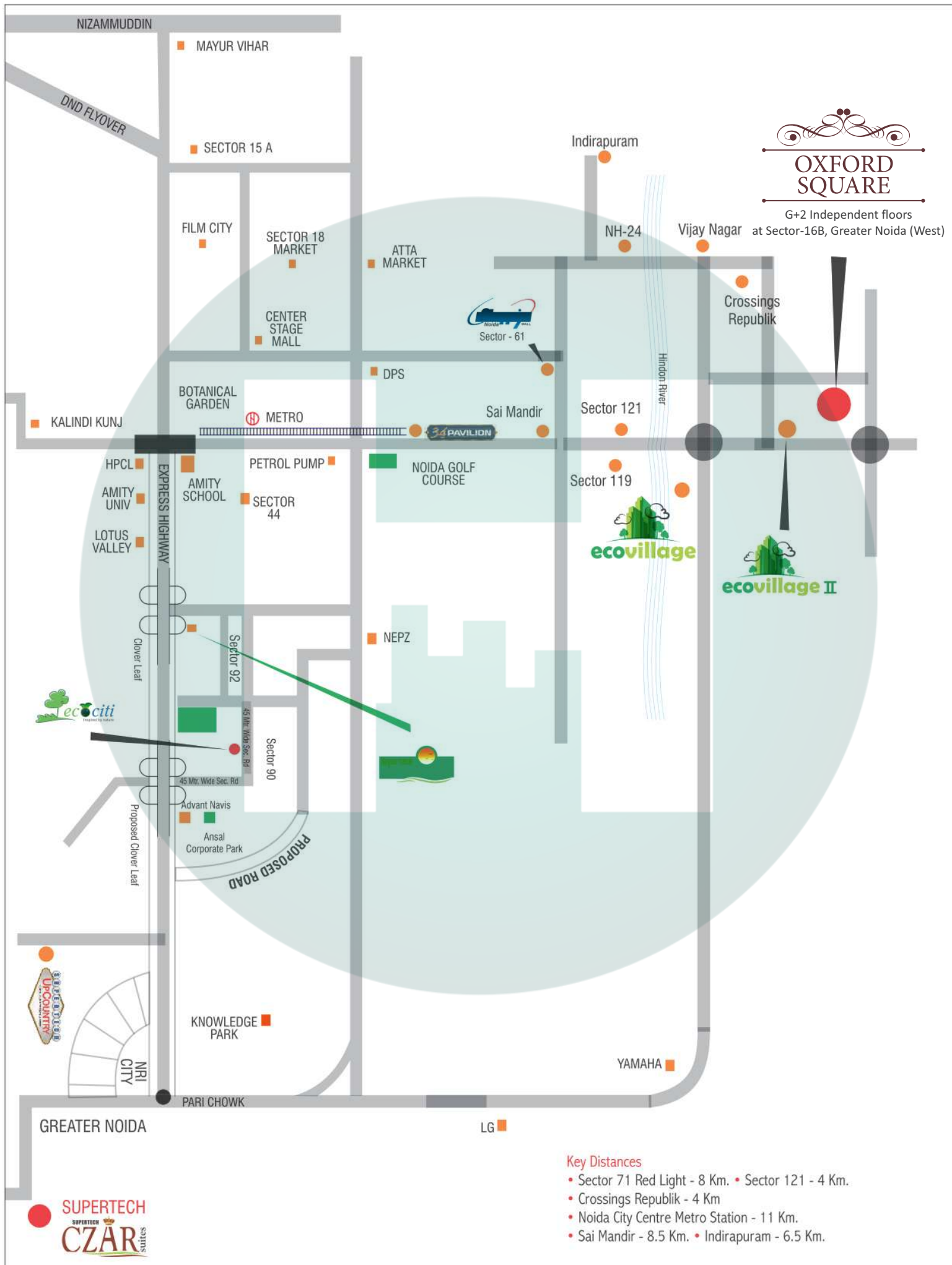
- Never before, villa type independent floors on 22 acres of prime location at Greater Noida (West)
- Choice of 2 & 3 BR, G + 2 floors in 125, 154 and 180 sq. yd.
- Duplex apartments on 1<sup>st</sup> and 2<sup>nd</sup> floor
- Exclusive lawn for ground floor
- Exclusive terrace garden and splash pool for 3<sup>rd</sup> floor
- Independent parking for all floors
- Lush green environs
- In-house club with modern facilities

# PREMIUM QUALITY LIFESTYLE

<b>Location</b>	GH-06, Sector-16B, Greater Noida West	<b>Launched Date</b>	1 November, 2010
<b>Project Area</b>	22 Acres	<b>Built up Area</b>	11 Acres
<b>Type</b>	Independent Low Rise Floors - 2, 3 & 4BHK	<b>Height</b>	Ground + 2
<b>Size</b>	1067 sq.ft to 2346 sq.ft	<b>Price</b>	Rs. 4550 psf (However it varies as per floors & sizes)
<b>Cost</b>	Rs. 48 Lacs* onwards	<b>Possession</b>	6 - 8 months
<b>Development</b>	Supertech Limited	<b>Architects</b>	M/s Space Designers
<b>Structural Consultants</b>	Supertech Limited	<b>Payment Plan</b>	Special Payment Plan, Construction Link Plan, Flexi Plan & Down Payment Plan
<b>Star Features</b>	<ul style="list-style-type: none"><li>• Only Independent floors in Greater Noida West</li><li>• Duplex with personal splash pool &amp; terrace garden</li><li>• Exclusive lawn for ground floor</li><li>• In house club with all modern facilities</li><li>• Fully air conditioned independent floors with complete wood work</li><li>• Vaastu friendly fengshui layout &amp; design</li><li>• Primary creche School in the complex</li><li>• Exclusive terrace garden and splash pool for 2nd floor duplex</li></ul>		



# LOCATION MAP



# SITE PLAN



- LEGEND:
- 01 = MAIN ENTRANCE
  - 02 = CLUB HOUSE
  - 03 = TENNIS COURT
  - 04 = ADULT POOL
  - 05 = KID'S POOL
  - 06 = MAIN POOL
  - 07 = BADMINTON COURT
  - 08 = PARTY LAWN
  - 09 = JOGGING TRACK
  - 10 = PUTTING GARDEN
  - 11 = AMPHITHEATRE
  - 12 = PAVILION
  - 13 = KID'S PLAY AREA
  - 14 = WATER FOUNTAIN
  - 15 = SKATING RINK
  - 16 = SUN DECK

## LEGEND

- 115 SQ. MET. 2 BED ROW HOUSING
- 154 SQ. MET. 2 BED + STUDY ROW HOUSING
- 190 SQ. MET. 3 BED ROW HOUSING
- COMMERCIAL, CLUB, STUDIOS, APARTMENTS
- 2 BED + 2 TOILET (115 SQ. FT.) = 01, 02, 03, 04 & 05
- 02, 04, 05, 06, 07, 08 & 09
- 03, 04, 05, 06, 07, 08 & 09
- 03 & 04 - 01, 02, 03 & 04
- 03 & 04 - 01, 02, 03 & 04

- 2 BED + 2 TOILET (115 SQ. FT.) = 01, 02, 03, 04 & 05
- 2 BED + 2 TOILET (115 SQ. FT.) = 01, 02, 03, 04 & 05
- 2 BED + 2 TOILET (115 SQ. FT.) = 01, 02, 03, 04 & 05
- 2 BED + 2 TOILET (115 SQ. FT.) = 01, 02, 03, 04 & 05
- 2 BED + 2 TOILET (115 SQ. FT.) = 01, 02, 03, 04 & 05
- 2 BED + 2 TOILET (115 SQ. FT.) = 01, 02, 03, 04 & 05
- 2 BED + 2 TOILET (115 SQ. FT.) = 01, 02, 03, 04 & 05
- 2 BED + 2 TOILET (115 SQ. FT.) = 01, 02, 03, 04 & 05

- 2 BED + 2 TOILET (115 SQ. FT.) = 01, 02, 03, 04 & 05
- 2 BED + 2 TOILET (115 SQ. FT.) = 01, 02, 03, 04 & 05
- 2 BED + 2 TOILET (115 SQ. FT.) = 01, 02, 03, 04 & 05
- 2 BED + 2 TOILET (115 SQ. FT.) = 01, 02, 03, 04 & 05
- 2 BED + 2 TOILET (115 SQ. FT.) = 01, 02, 03, 04 & 05
- 2 BED + 2 TOILET (115 SQ. FT.) = 01, 02, 03, 04 & 05
- 2 BED + 2 TOILET (115 SQ. FT.) = 01, 02, 03, 04 & 05
- 2 BED + 2 TOILET (115 SQ. FT.) = 01, 02, 03, 04 & 05

**OXFORD SQUARE &  
ECOVILLAGE - III  
AT SECTOR - 16B,  
GREATER NOIDA**



# SITE PLAN WITH BLOCK DETAILS

## BLOCK G (125 Sq. Yds.)

Gr.Floor	1145 Sq. Ft.	Unit No. All
1st Floor	1067 Sq. Ft.	Unit No. All
2nd Floor	1793 + 171 Sq. Ft.	Unit No. 1 to 12
3rd Floor	(Duplex)	& 15 to 26

## BLOCK F (125 Sq. Yds.)

Gr.Floor	1145 Sq. Ft.	Unit No. 1 to 12 & 15 to 26
1st Floor	1067 Sq. Ft.	Unit No. All
2nd Floor	1793 + 171 Sq. Ft.	Unit No. 1 to 12 & 15 to 26
3rd Floor	(Duplex)	

## BLOCK F (154 Sq. Yds.)

Gr. Floor	1440 Sq. Ft.	Unit No. 12A & 14
2nd Floor	2122 + 178 Sq. Ft.	Unit No. 12A & 14
3rd Floor	(Duplex)	

## BLOCK E (125 Sq. Yds.)

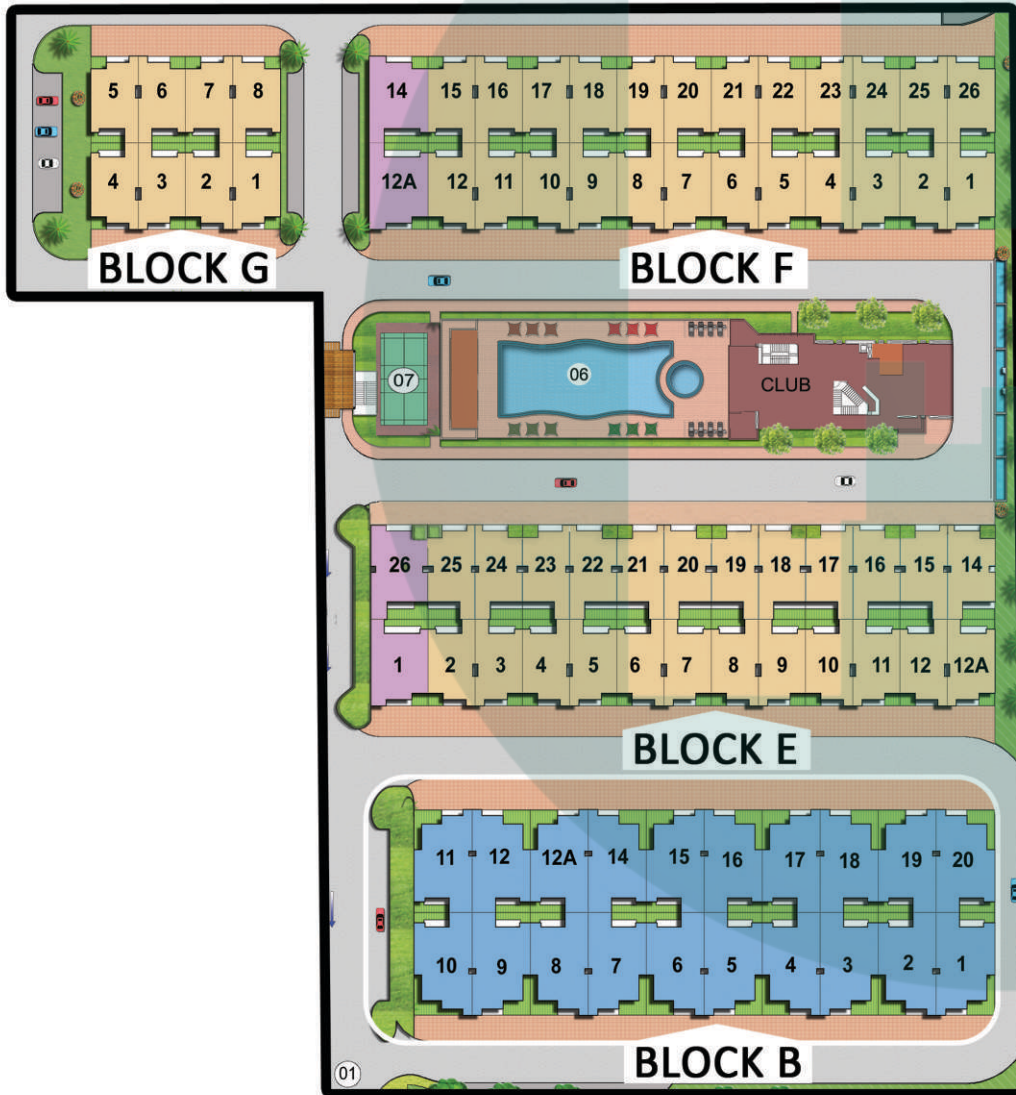
Basement	750 Sq. Ft.	
Gr. Floor	1145 Sq. Ft.	Unit No. 2 to 25
1st Floor	1067 Sq. Ft.	
2nd Floor	1067 Sq. Ft.	
3rd Floor	1067 Sq. Ft.	

## BLOCK E (154 Sq. Yds.)

Basement	897 Sq. Ft.	
Gr. Floor	1440 Sq. Ft.	Unit No. 1 & 26
1st Floor	1347 Sq. Ft.	
2nd Floor	1347 Sq. Ft.	
3rd Floor	1347 Sq. Ft.	

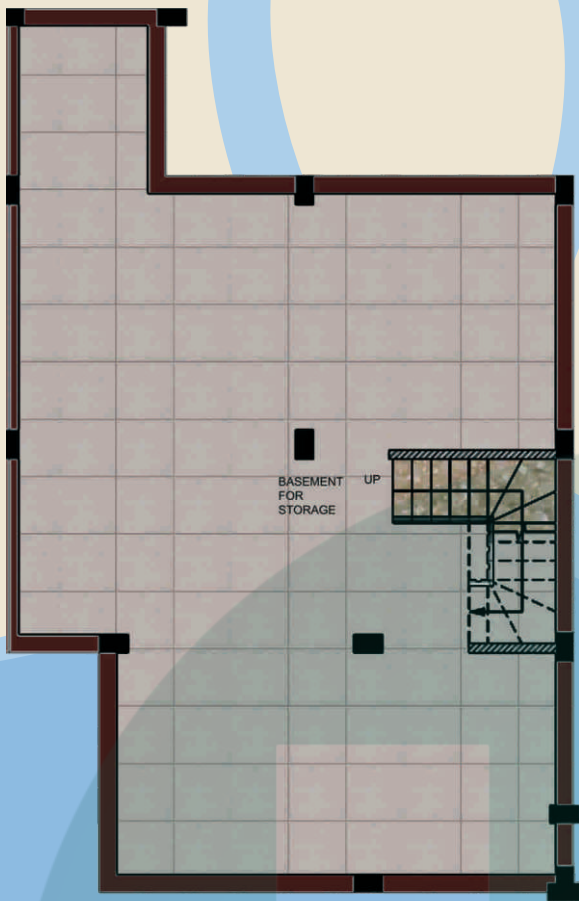
## BLOCK B (180 Sq. Yds.)

Gr. Floor	1602 Sq. Ft.	Unit No. All
1st Floor	1463 Sq. Ft.	Unit No. 1 to 20
2nd Floor	1463 Sq. Ft.	Unit No. 3 to 8 & 12A to 18
3rd Floor	1463 Sq. Ft.	Unit No. 3 to 8 & 12A to 18
2nd Floor 3rd Floor	2346 + 311 Sq. Ft. (Duplex)	Unit No. 1,2,9,10,11,12,19 & 20

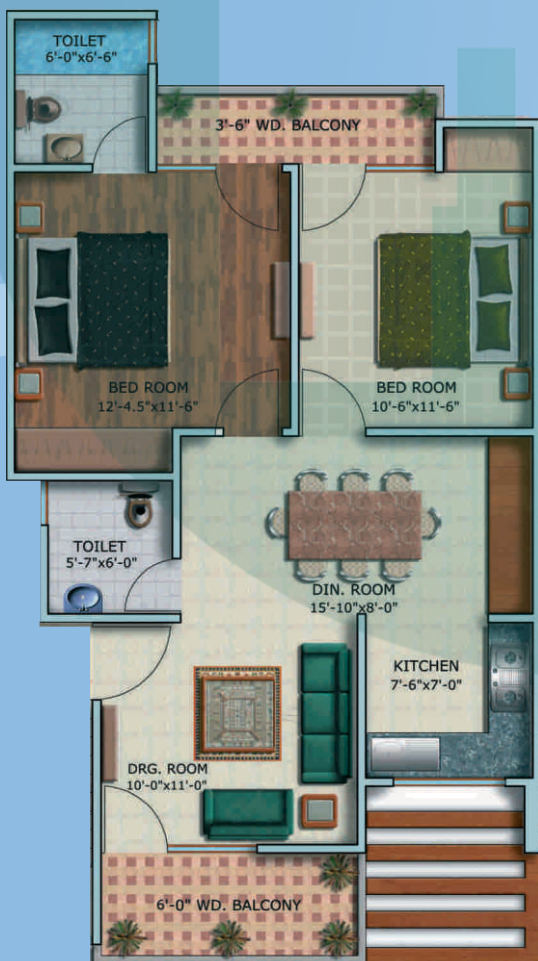


# FLOOR PLANS

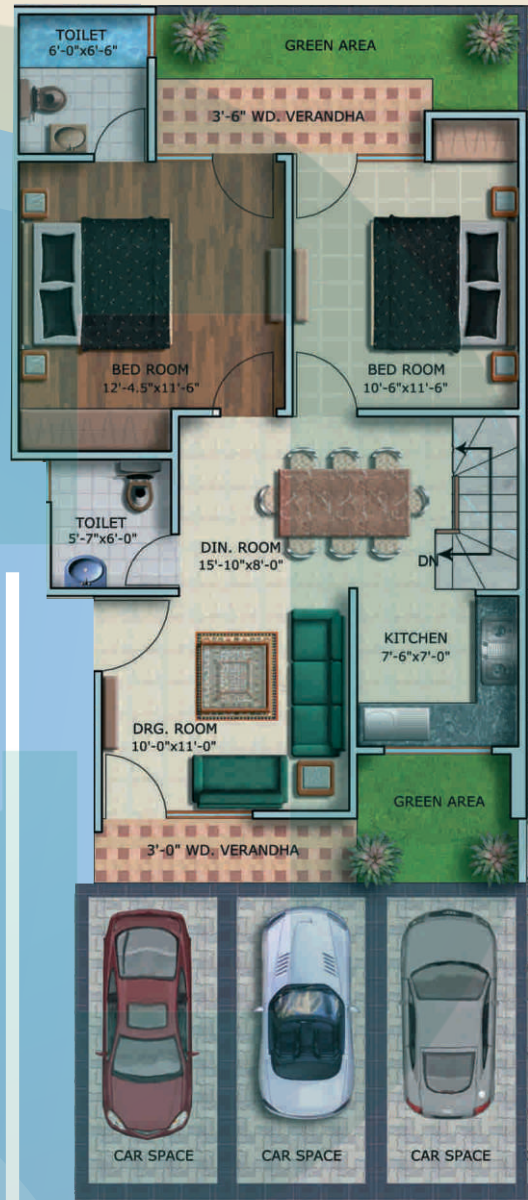
Super area 125 sq.yd.



Basement Floor Plan - 750 sq.ft.  
Block E



1st, 2nd & 3rd Floor Plan - 1067 sq. ft.  
2 Bedrooms + Dining + Kitchen + 2 Toilets + 2 Balconies  
Block E



Ground Floor Plan - 1145 sq. ft.  
2 Bedrooms + Dining + Kitchen + 2 Toilets + 2 Balconies  
Block E, F & G



# FLOOR PLANS

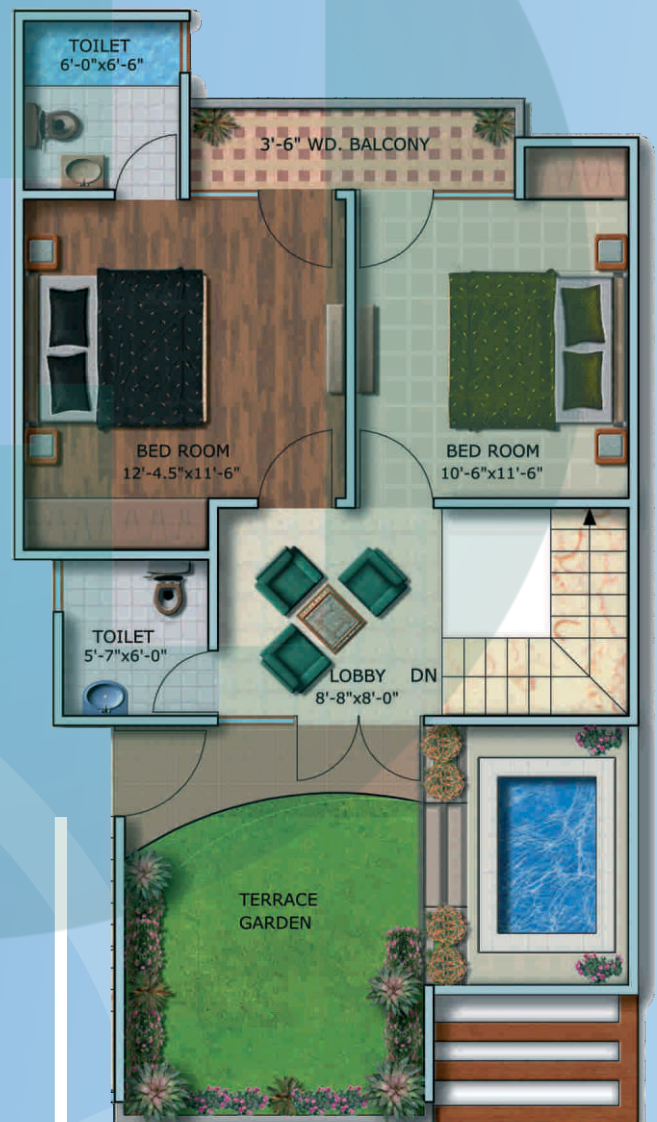
Super area 125 sq.yd.

Block F, Unit No. 1 to 12 & 15 to 26

Block G, Unit No. 1 to 8



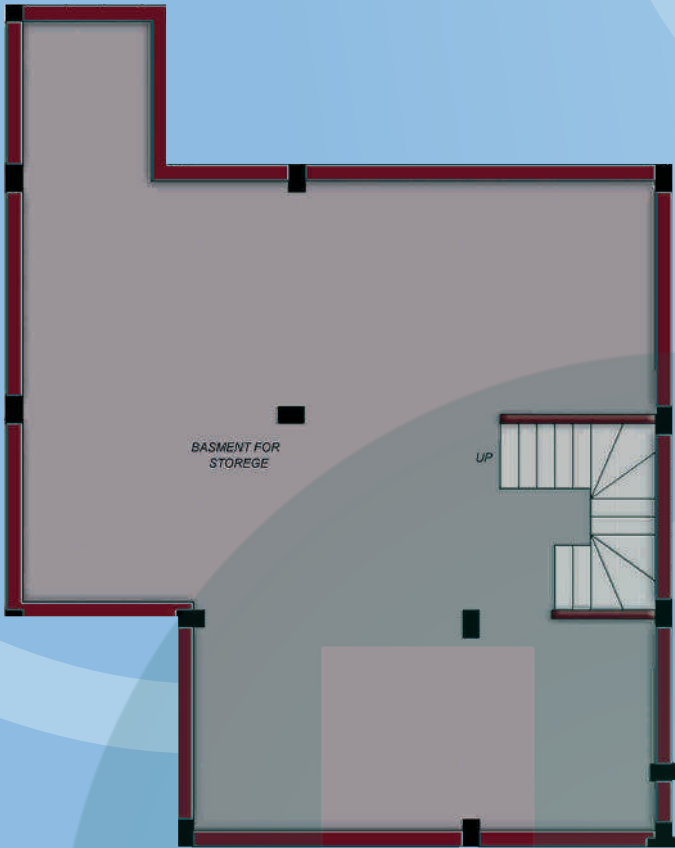
2nd Floor Plan - 1793 sq. ft. + 171 sq. ft. (Terrace)  
1 Bedroom + Puja room & Study room + Dining  
+ Kitchen + 2 Toilets + 2 Balconies



3rd Floor Plan  
2 Bedroom + Lobby + 2 Toilets + Terrace Garden  
+ Water Body + 1 Balcony

# FLOOR PLANS

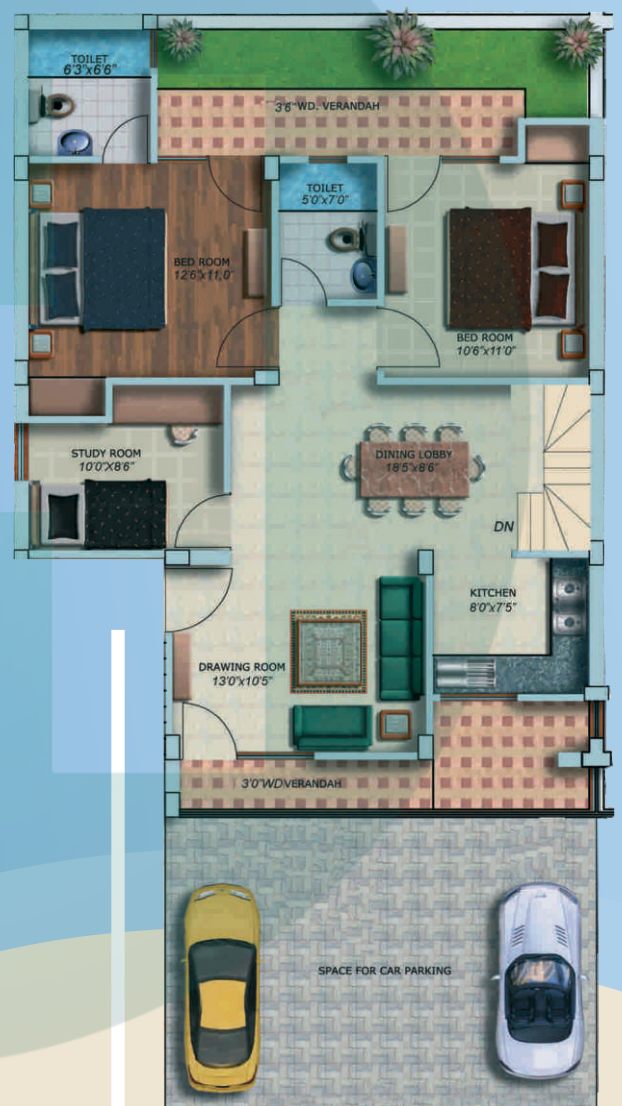
Super area 154 sq.yd.



Basement Floor Plan - 897 sq. ft.  
Block E, Unit No. 1 & 26



1st, 2nd & 3rd Floor Plan - 1347 sq. ft.  
2 Bedrooms + Study Room + Dining + Kitchen + 2 Toilets + 2 Balconies  
Block E, Unit No. 1 & 26



Ground Floor Plan - 1440 sq. ft.  
2 Bedrooms + Study Room + Dining + Kitchen  
+ 2 Toilets + 2 Balconies  
Block E, Unit No. 1 & 26  
Block F, Unit No. 12A & 14

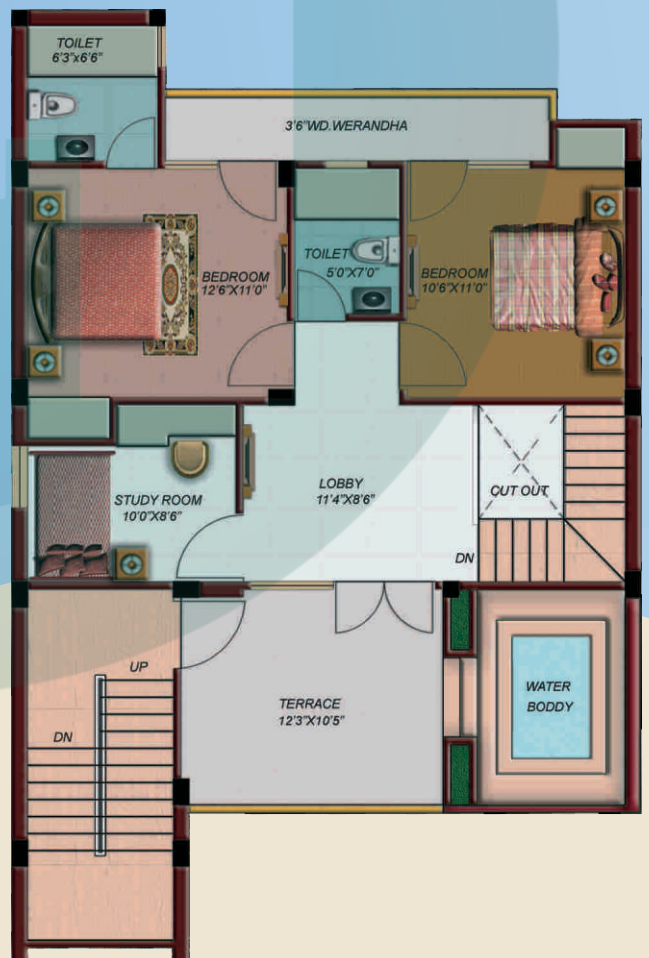


# FLOOR PLANS

Super area 154 sq.yd.  
Block F, Unit No. 12A & 14



2nd Floor Plan - 2122 sq. ft. + 178 sq. ft. (Terrace)  
1 Bedroom + Study Room + Puja Room + Dining  
+ Kitchen + 2 Toilets + 2 Balconies



3rd Floor Plan  
2 Bedrooms + Study Room + Lobby + 2 Toilets  
+ Terrace + Water Body

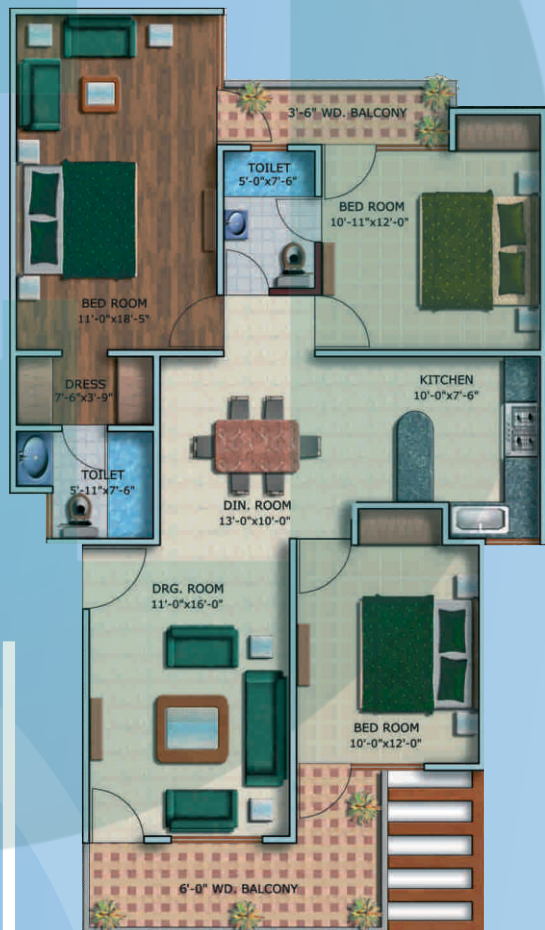
# FLOOR PLANS

Super area 180 sq.yd.

Block B



Ground Floor Plan - 1602 sq. ft.  
3 Bedrooms + Dining + Kitchen + 2 Toilets  
+ 2 Balconies + Green Area



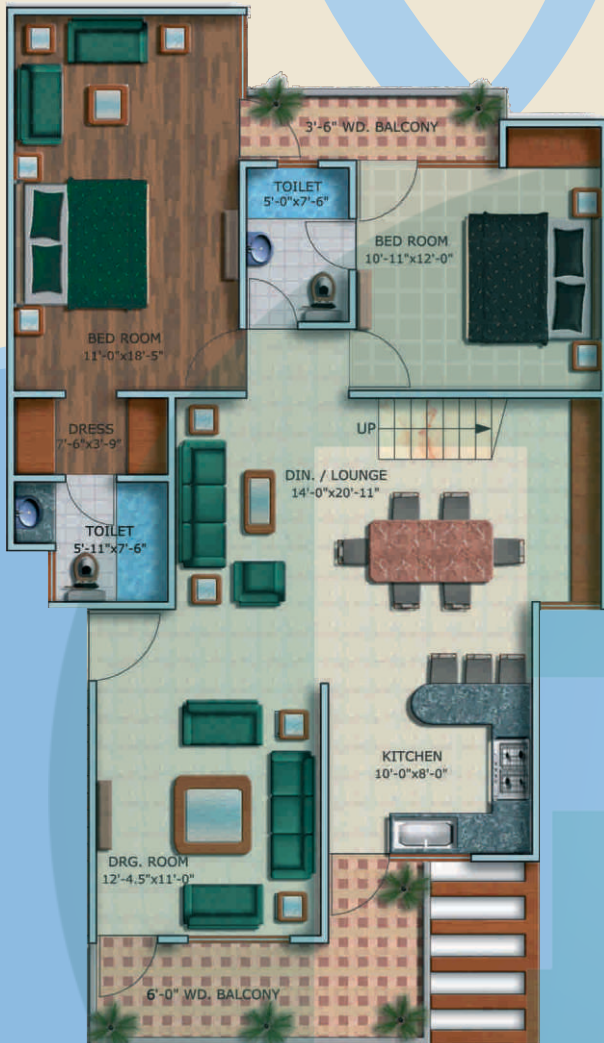
1st, 2nd & 3rd Floor Plan 1463 sq. ft.  
3 Bedrooms + Dining + Kitchen + 2 Toilets + 2 Balconies  
First Floor Unit No. 1 to 20  
Second Floor (Simplex) Unit No. 3 to 8 & 12A to 18



# FLOOR PLANS

Super area 180 sq.yd.

Block B, Unit No. 1, 2, 9, 10, 11, 12, 19 & 20



2nd Floor Plan - 2346 sq. ft. + 311 sq. ft. (Terrace)  
2 Bedrooms + Dining + Kitchen  
+ 2 Toilets + 2 Balconies



3rd Floor Plan  
2 Bedrooms + Lobby + 2 Toilets + Terrace Garden  
+ Water Body + 1 Balcony

# SPECIFICATIONS

LOCATION	FLOOR	EXTERNAL DOOR AND WINDOW	ELECTRICAL FITTINGS	WALLS	FITTINGS	INTERNAL DOOR	HARDWARE	ELECTRICAL	WATER SUPPLY	CEILINGS
LIVING ROOM	Vitrified Tiles	Powder Coated Aluminium with Double Rebate	Sheet and Switches	Oil Bound Distemper	Split AC	8	All doors and windows with metal fittings along with mortice lock on the main door	Copper wiring and PVC concealed conduit. Provision for adequate light and power points as well as Television and T.V. outlets with modular switches and protective M.C.B.'s	Underground and overhead water tanks with pumps and 24 hours water supply. Individual R.O. plant of standard make in each kitchen.	Oil Bound Distemper
DINING	Vitrified Tiles	Powder Coated Aluminium with Double Rebate	Sheet and Switches	Oil Bound Distemper	-	Flush Shutter with Wooden Frame				Oil Bound Distemper
BEDROOM	Vitrified Tiles	Powder Coated Aluminium with Double Rebate	Sheet and Switches	Oil Bound Distemper	Wardrobe + Split AC	Flush Shutter with Wooden Frame				Oil Bound Distemper
MASTER BEDROOM	Vitrified Tiles	Powder Coated Aluminium with Double Rebate	Sheet and Switches	Oil Bound Distemper	Wardrobe + Split AC	Flush Shutter with Wooden Frame				Oil Bound Distemper
DRESSING ROOM	Vitrified Tiles	Powder Coated Aluminium with Double Rebate	Sheet and Switches	Oil Bound Distemper	-	Flush Shutter with Wooden Frame				Oil Bound Distemper
SERVANT ROOM	Ceramic Tiles	Powder Coated Aluminium with Double Rebate	Sheet and Switches	Oil Bound Distemper	-	Flush Shutter with Wooden Frame				Oil Bound Distemper
KITCHEN	Vitrified Tiles	Powder Coated Aluminium with Double Rebate	Sheet and Switches	Ceramic Tiles of 2' height from the platform	Stainless Steel Sink with C.P. Fittings Modular Kitchen	Open				Oil Bound Distemper
TOILET	Ceramic Tiles	-	Sheet and Switches	Ceramic Tiles of 7' height	Washbasin WC & C.P. Fittings	Flush Shutter				False Ceiling
BALCONIES	Ceramic Tiles	-	Sheet and Switches	Oil Bound Distemper	-	-				Permanent Paint Finish
LOBBIES/CORRIDOR	Kota Stone / Vitrified Tiles	-	-	Oil Bound Distemper	-	-				-
EXTERIOR FINISH	-	-	-	Texture Paint	-	Flush Shutter with Wooden Frame				-



## 2 BHK Block

### CLP Plan

Floor	Size sq. ft.	Rate sq. ft.	Basic Cost (Rs.)
Ground	1145	4778	5470810
1st Floor	1067	4725	5041575
2nd Floor	1793	4673	8583889
Duplex	Terrace 171	1200	

### Flexi Plan

Floor	Size sq. ft.	Rate sq. ft.	Basic Cost (Rs.)
Ground	1145	4550	5209750
1st Floor	1067	4500	4801500
2nd Floor	1793	4450	8184050
Duplex	Terrace 171	1200	

### DP Plan

Floor	Size sq. ft.	Rate sq. ft.	Basic Cost (Rs.)
Ground	1145	4323	4949835
1st Floor	1067	4275	4561425
2nd Floor	1793	4228	7786004
Duplex	Terrace 171	1200	

### CLP Plan

Floor	Size sq. ft.	Rate sq. ft.	Basic Cost (Rs.)
Ground	1145	4773	7340085
	LGF 750	2500	
1st Floor	1067	4725	5041575
Simplex 2nd Floor	1067	4673	4986091
Simplex 3rd Floor	1067	4620	4929590

### Flexi Plan

Floor	Size sq. ft.	Rate sq. ft.	Basic Cost (Rs.)
Ground	1145	4550	7084750
	LGF 750	2500	
1st Floor	1067	4500	4801500
Simplex 2nd Floor	1067	4450	4748150
Simplex 3rd Floor	1067	4400	4694800

### DP Plan

Floor	Size sq. ft.	Rate sq. ft.	Basic Cost (Rs.)
Ground	1145	4323	6824835
	LGF 750	2500	
1st Floor	1067	4275	4561425
Simplex 2nd Floor	1067	4228	4511276
Simplex 3rd Floor	1067	3600	3841200

## 2 BHK + STUDY

### CLP Plan

Floor	Size sq. ft.	Rate sq. ft.	Basic Cost (Rs.)
Ground	1440	4778	9122820
	LGF 897	2500	
1st Floor	1347	4725	6364575
Simplex 2nd Floor	1347	4673	6294531
Simplex 3rd Floor	1347	4620	6223140
2nd Floor Duplex	2122	4673	10129706
	Terrace 178	1200	

### Flexi Plan

Floor	Size sq. ft.	Rate sq. ft.	Basic Cost (Rs.)
Ground	1440	4550	8794500
	LGF 897	2500	
1st Floor	1347	4500	6061500
Simplex 2nd Floor	1347	4450	5994150
Simplex 3rd Floor	1347	4400	5926800
2nd Floor Duplex	2122	3850	8383300
	Terrace 178	1200	

### DP Plan

Floor	Size sq. ft.	Rate sq. ft.	Basic Cost (Rs.)
Ground	1440	4323	8467620
	LGF 897	2500	
1st Floor	1347	4275	5758425
Simplex 2nd Floor	1347	4228	5695116
Simplex 3rd Floor	1347	4180	5630460
2nd Floor Duplex	2122	4228	9185416
	Terrace 178	1200	



## 3 BHK BLOCK

### CLP Plan

Floor	Size sq. ft.	Rate sq. ft.	Basic Cost (Rs.)
Ground	1602	4778	7654356
1st Floor	1463	4725	6912675
Simplex 2nd Floor	1463	4673	6836599
Simplex 3rd Floor	1463	4620	6759060
2nd Floor	2346	4673	11336058
Duplex	Terrace 311	1200	

### Flexi Plan

Floor	Size sq. ft.	Rate sq. ft.	Basic Cost (Rs.)
Ground	1602	4550	7289100
1st Floor	1463	4500	6583500
Simplex 2nd Floor	1463	4450	6510350
Simplex 3rd Floor	1463	4400	6437200
2nd Floor	2346	4450	10811700
Duplex	Terrace 311	1200	

### DP Plan

Floor	Size sq. ft.	Rate sq. ft.	Basic Cost (Rs.)
Ground	1602	4323	6925446
1st Floor	1463	4275	6254325
Simplex 2nd Floor	1463	4228	6185564
Simplex 3rd Floor	1463	4180	6115340
2nd Floor	2346	4228	10292088
Duplex	Terrace 311	1200	

### Preferential Location PLC

1. Corner Park Facing @ Rs. 50/- per sq. ft.
2. Park Facing/Main Road Facing @ Rs. 50/- per sq. ft.

### Additional Charges (Mandatory)

One Time Lease Rent	Rs. 85/- per sq. ft.	Club Membership	Rs. 1,00,000/-
External Development Charges (EDC)	RS. 40/- per sq. ft.	Electricity Installation Charges (Min 2 kva Man.)	Rs. 20,000/- kVA
Interest Free Maintenance Security(IFMS)	Rs. 25/- per sq. ft.	Power Back Up Charges (Min. 1Kva Man.)	Rs. 20,000/- kVA
Car Parking (inclusive)	Rs. 2,50,000/-		

## PAYMENT PLAN

### (A) Down Payment Plan

At the time of booking	10%
Within 30 days from booking	85%
On offer of possession	05%

### (B) Flexi Payment Plan

At the time of booking	10%	On Casting of ground floor Slab	09%
Within 60 days of booking	40%	On casting of First floor slab	09%
On Excavation	09%	On casting of second floor slab	09%
On Completion of foundation	09%	On offer of possession	05%

### (C) Construction Linked Payment Plan

At the time of booking	10%	On casting of First floor slab	15%
On Excavation	15%	On casting of Second floor slab	15%
On Completion of foundation	15%	On Brick work and Plaster	10%
On Casting of ground floor Slab	15%	On offer of possession	05%

### Terms and conditions:

- 1) Price list as on date of booking shall be applicable.
- 2) PLCs if any shall be charged alongwith installments towards basic cost.
- 3) Cheques/Bank Drafts to be issued in favour of '**SUPERTECH LIMITED**' payable at New Delhi/Noida. Out station cheques shall not be accepted.
- 4) Electricity Installation Charges, Maintenance Charges, Meter Connection Charges and other charges are extra and shall be collected before the possession.
- 5) Service tax, VAT & other government levies are extra, as applicable.
- 6) Registration, Stamp Duty and misc. charges shall be payable at the time of Offer of Possession.
- 7) Super Area includes the covered area plus the proportionate area under Common Corridor, Passages, Staircases, Munties, Projections, Water Tanks, Lift Wells, etc.
- 8) The terms and condition of sale stated herein are indicative and are subject to detailed terms & conditions in the 'Agreement to Sell' / 'Flat Buyer's Agreement' and are subject to change at sole discretion of the company.
- 9) All building plans, layouts, specifications are subject to changes and modifications as decided by the company, architect or any other competent authority.
- 10) Timely payments of the installments is the essence of the Booking.
- 11) This Price List supercedes all previous price lists



- 1 Under which authority does the project follow in?**  
Greater Noida West
- 2 Under what Village this project lies?**  
ROZA YAKUBPUR
- 3 Do we have all the necessary clearances of the project?**  
Yes
- 4 Name a few projects which have been delivered by Supertech?**  
Shopprix – Noida, Vaishali & Kaushambi, Supertech Plaza, Supertech Homes, Palm Greens, Superetch Enclave, Icon – Gaziabad, 34 Pavillion - Noida, Czar and more
- 5 What are the total number of projects of Supertech in Greater Noida West?**  
Three, namely Eco Village - 1, Eco - Village 2 & Eco - Village 3
- 6 What are the total number of units in Eco - Village 3?**  
Approx. 3000 units
- 7 What are the total no. of club houses in Eco Village 3?**  
Two.
- 8 Oxford Square lies under which project of Supertech?**  
Eco - Village 3
- 9 What are the total number of units in Oxford Square?**  
Approx. 275 Units
- 10 What is the height of the building?**  
G+2
- 11 What are the types of bedroom in the project ?**  
2/3/4 BHK
- 12 What are the offerings in the types ?**  
Oxford Square offers Simplex & Duplex options.
- 13 What are the total no. of blocks of the project?**  
There are four blocks of the project naming, Block B, E, F & G
- 14 What are the plot sizes of different blocks?**  
Block G - 125 Sq.yds.  
Block F & E - Combination of 125 sq.yds. & 154 Sq.yds.  
Block G - 180 Sq.yds.
- 15 Duplexes are in which block ?**  
Block B, F and G

**16 Do all Blocks offer Basement option along Ground Floor ?**

No, Only Block E offers Basement.

**17 What is the possession period?**

6 - 8 Months

**18 What is the penalty clause?**

Rs. 5 psf

**19 What are the Payment Plans?**

Special Payment Plan, Construction Payment Plan, Flexi Payment Plan & Down Payment Plan.

**20 What shall be the parking area in oxford square?**

Ground Floor

**21 What are the Special offers of the project?**

Special Payment Plan, Free Car Parking

**22 Top 5 features of the project are?**

- \*Low Rise Independent Floors
- \*Low Density in the project area as there are limited unist only.
- \*The project is well connected to Noida & easily connected to Delhi & Gaziabad.
- \*Home loan available from leading banks
- \*The residents of Oxford Square can enjoy the amenities & offerings of club which is exclusive for residents only

**23 Which Banks are funding the project?**

HDFC, Indiabulls, IDBI, Corporation Bank, LIC HFL, ICICI Bank, PNB, bank of India, DHFL, Axis Bank, OBC, cental Bank of India, bank of Baroda etc..

**24 Amenties of the project?**

Swimming pool, Health Club, Medical Centre, Ayurvedic Massage Centre, Badminton Court, Tennis Court & Amphitheatre, Round the clock customer care, Shopping complex with in the complex, Reticulated gas supply to every kitchenm, Earthquake Resistance R.C.C. frame structure, Non-load bearing brick wallsm, CNG operated power backup generation, In house garbage/sewage treatment plan, Fire Suppression System

**25 Cheque/DD shall be drawn in whose favor at the time of booking and then after?**

It shall be drawn in favor of "Supertech Limited"





**supertech**  
*Yours for Life*



Call Us: **+91-9582252135**